



# SAP BTP

The foundation of the intelligent sustainable enterprise

Mohamed Abdel Hadi

CTO Business Technology Platform

Vice President of Customer Advisory Group MEE

SAP



# Legal Disclaimer

The information in this presentation is confidential and proprietary to SAP and may not be disclosed without the permission of SAP. This presentation is not subject to your license agreement or any other service or subscription agreement with SAP. SAP has no obligation to pursue any course of business outlined in this document or any related presentation, or to develop or release any functionality mentioned therein. This document, or any related presentations and **SAP's strategy and possible future developments, products and or platforms directions and functionality are all subject to change and may be changed by SAP at any time for any reason without notice.** The information in this document is not a commitment, promise or legal obligation to deliver any material, code or functionality. This document is provided without a warranty of any kind, either express or implied, including but not limited to, the implied warranties of merchantability, fitness for a particular purpose, or non-infringement. This document is for informational purposes and may not be incorporated into a contract. SAP assumed no responsibility for errors or omissions in this document, except if such damages were caused by SAP's willful misconduct or gross negligence.

All forward-looking statements are subject to various risks and uncertainties that could cause actual results to differ materially from expectations. Readers are cautioned not to place undue reliance on these forward-looking statements, which speak only as of their dates, and they should not be relied upon in making purchasing decisions.



A hiker with a large red backpack stands on a rocky, moss-covered mountain peak. The background is a vast, blue-tinted mountain range with snow-capped peaks and a valley below. The sky is clear and blue.

The world  
2023





New risks

+

New requirements

***Wars***

***Pandemic***

***Labor shortage***

***Inflation***

***Sustainability***

***Customer experience***

***Cybersecurity***

***IT talents***

# CIO priorities

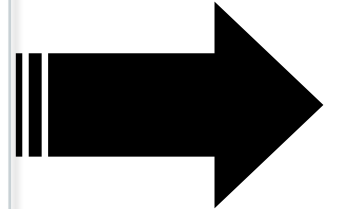
Source: 2023 Gartner CIO and Technology Executive Survey

# CIO

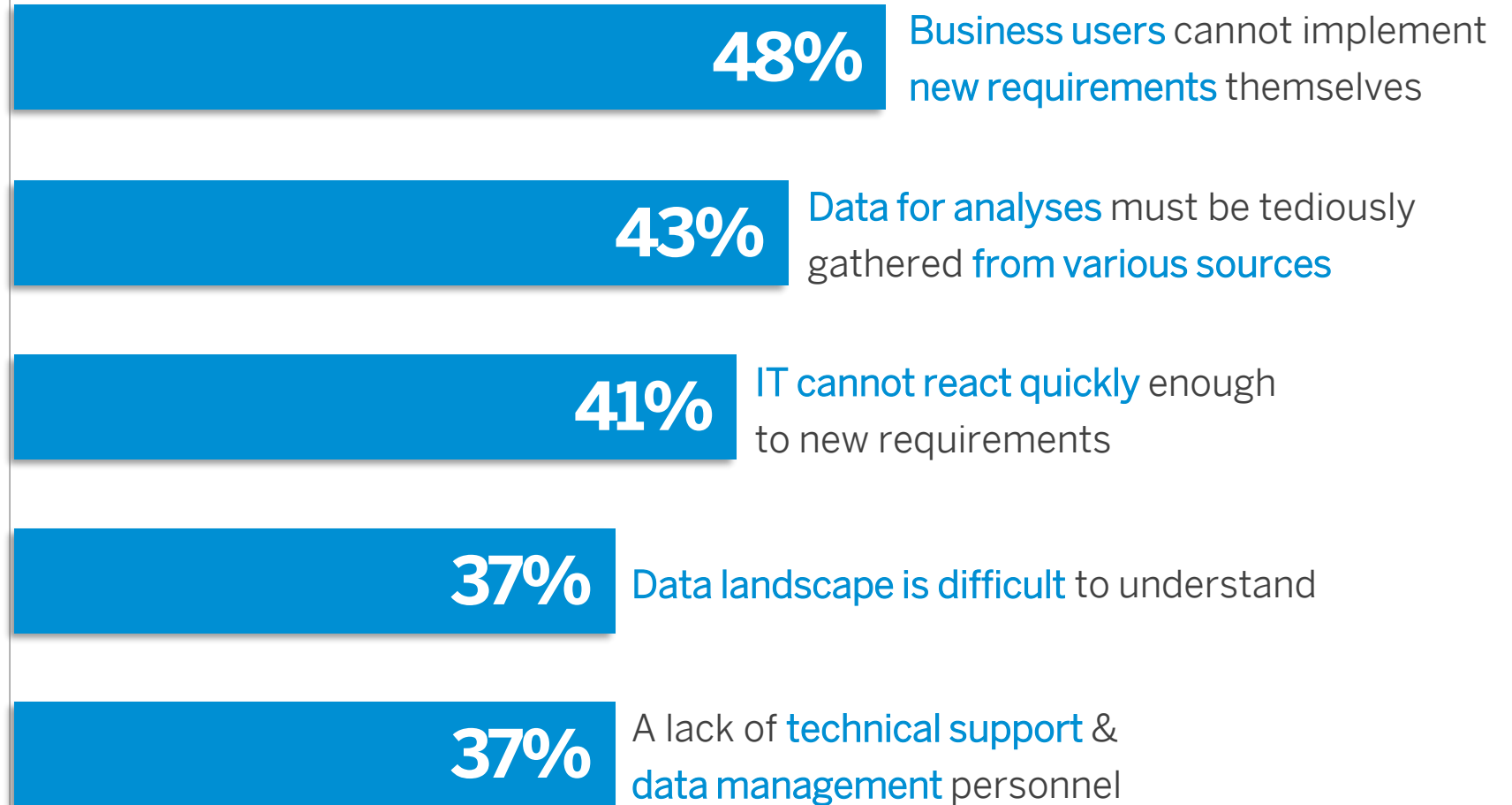
**Gartner Survey of Over 2,000 CIOs Reveals the Need to Accelerate Time to Value from Digital Investments**

Accelerate Time  
to Value

Operational  
Excellence



# What challenges do data users in your company face?



Accelerated, value-driven  
**Cloud Transformation**



# Planet BTP: Speed date

Your main questions answered right now





# Your burning questions answered now

🔍 | SAP BTP



- 🕒 What is SAP BTP?
- 🕒 Why is SAP BTP important?
- 🕒 Who uses SAP BTP?
- 🕒 What is SAP BTP used for?
- 🕒 What does SAP BTP look like?



BTP is a content-rich platform with focus on business centricity. It provides a unified environment and is optimized for SAP applications yet open for non-SAP integration.

It's capabilities contain [application development](#), [automation](#), [integration](#), [data and analytics](#), and [AI](#).



# Your burning questions answered now

🔍 | SAP BTP



🕒 What is SAP BTP?

🕒 Why is SAP BTP important?

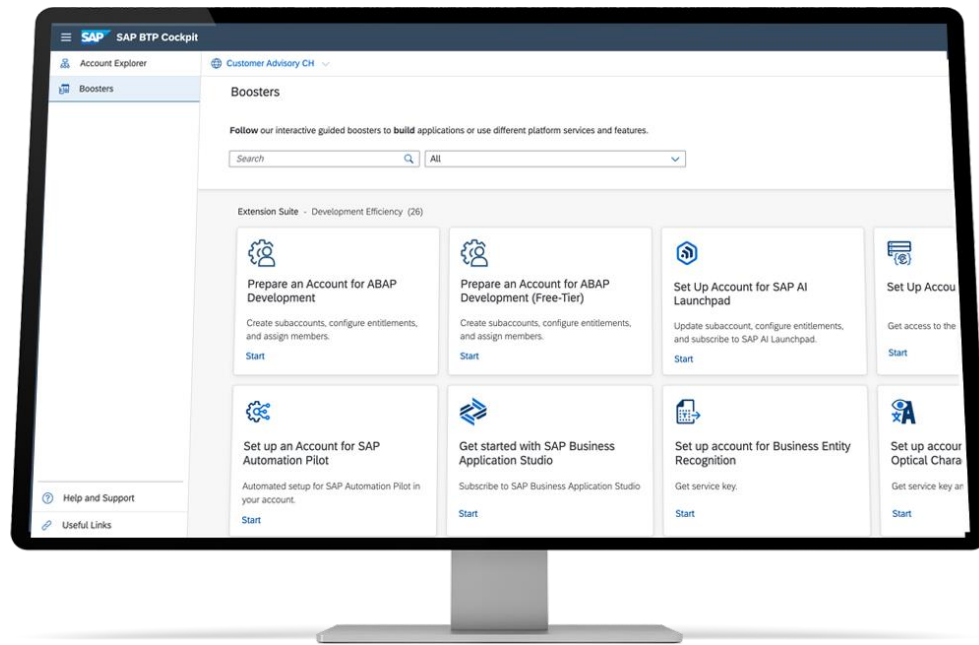
🕒 Who uses SAP BTP?

🕒 What is SAP BTP used for?

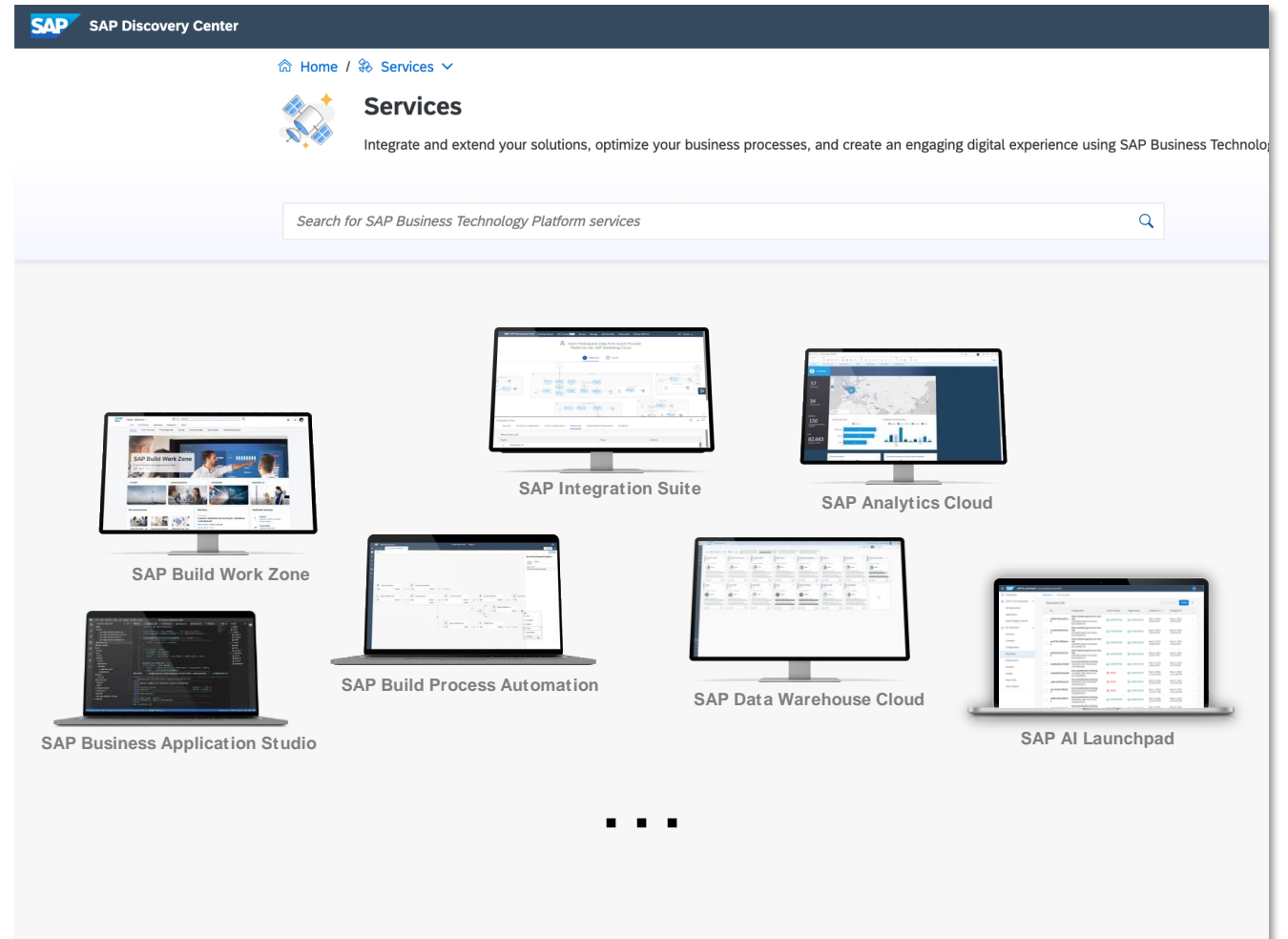
🕒 What does SAP BTP look like?



# Meet SAP BTP (selection)



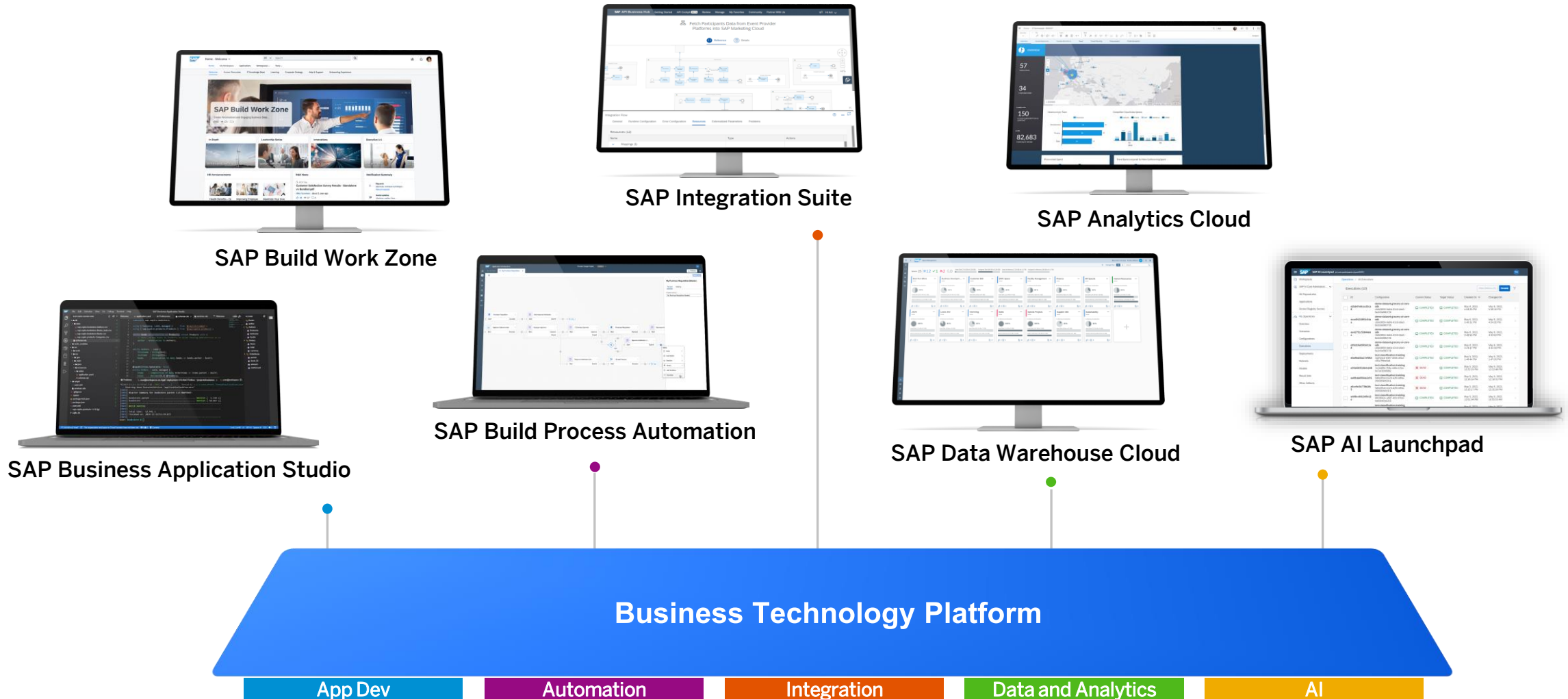
**SAP BTP Cockpit**



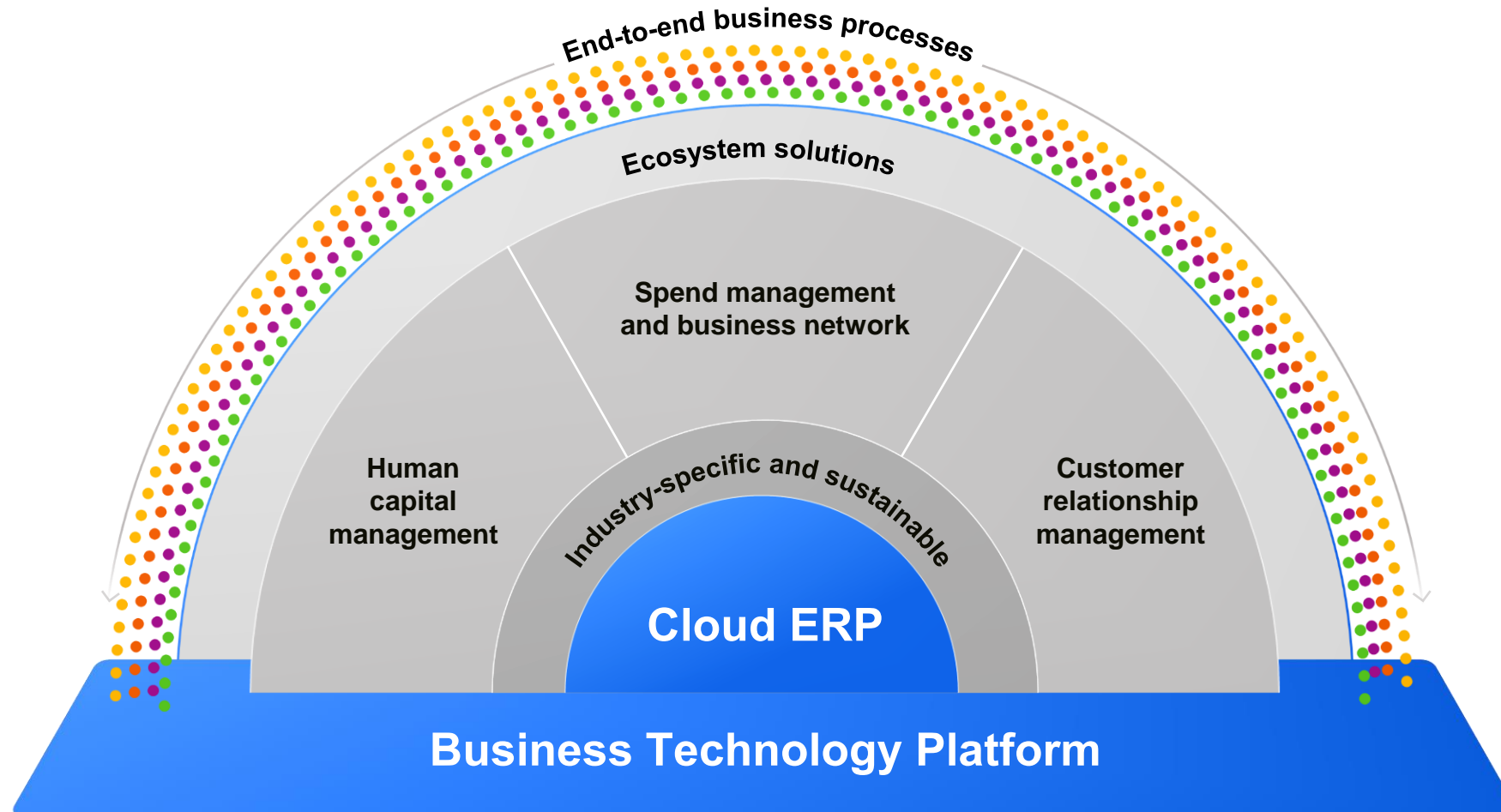
**95+ Services**



# SAP BTP: Access, combine, and distribute any technology



# SAP BTP: The centerpiece of SAP's overall strategy



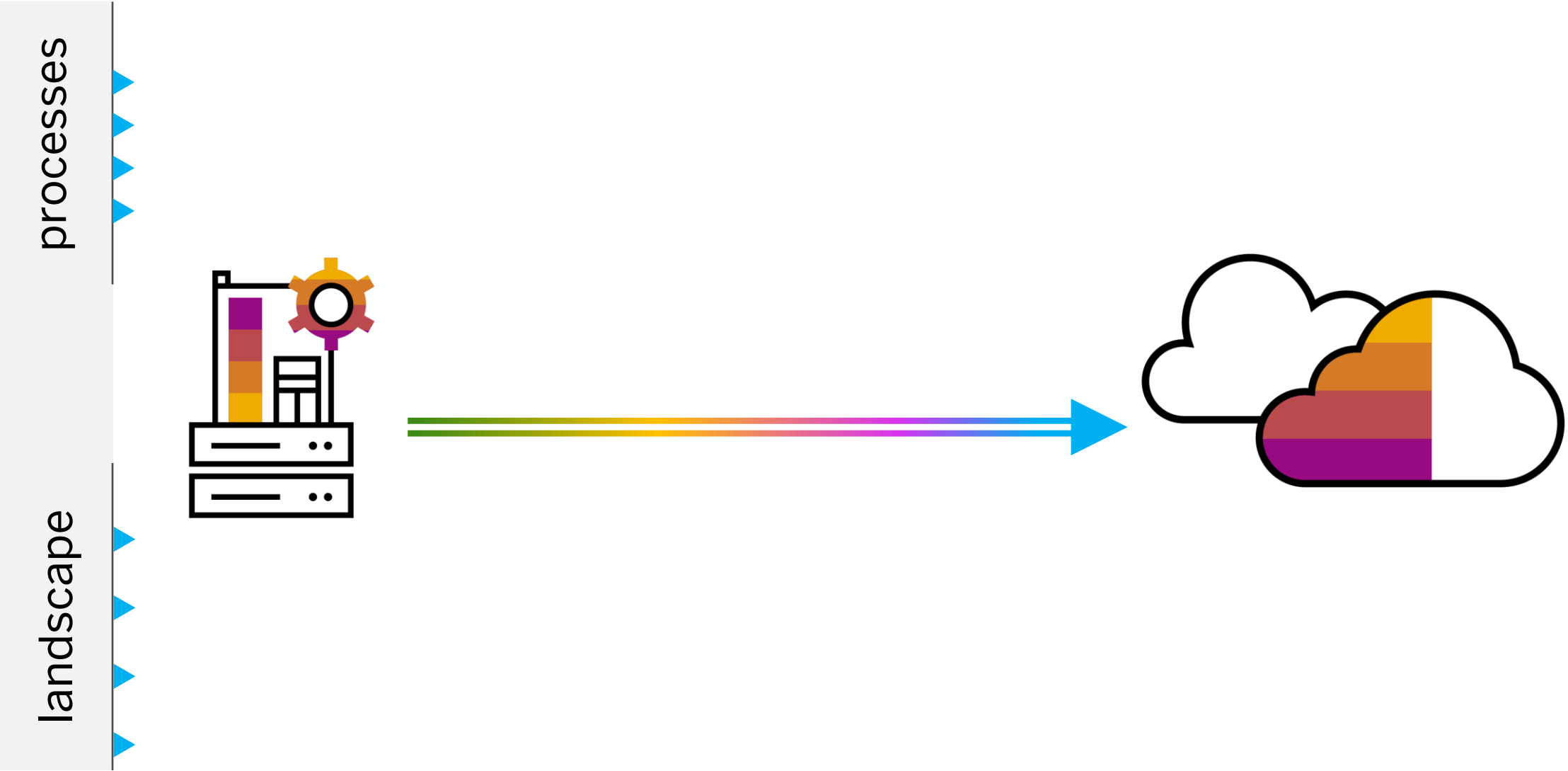


on premises

cloud

# Best cloud transformation with SAP BTP

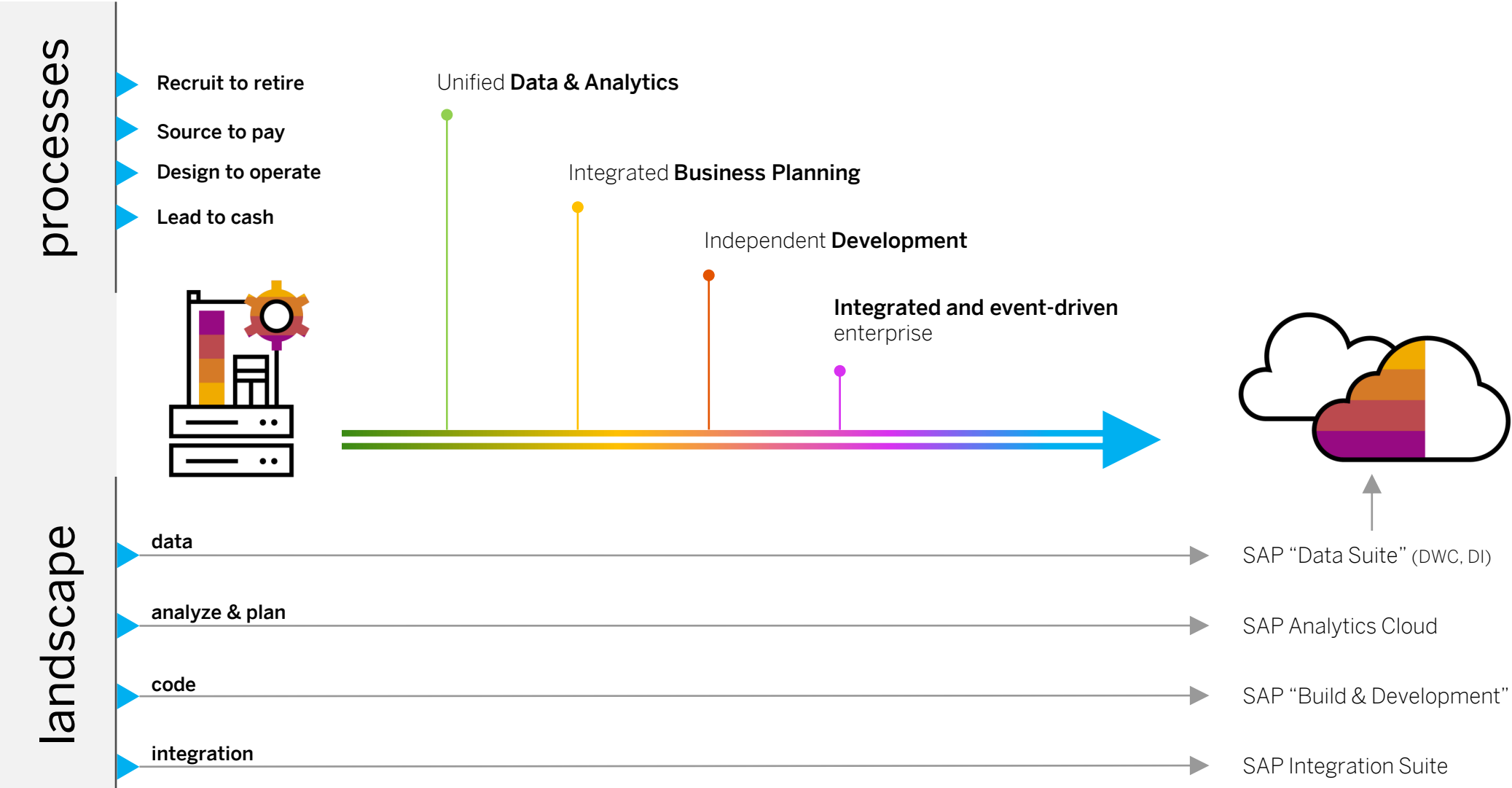
value-oriented, business focused, simplified





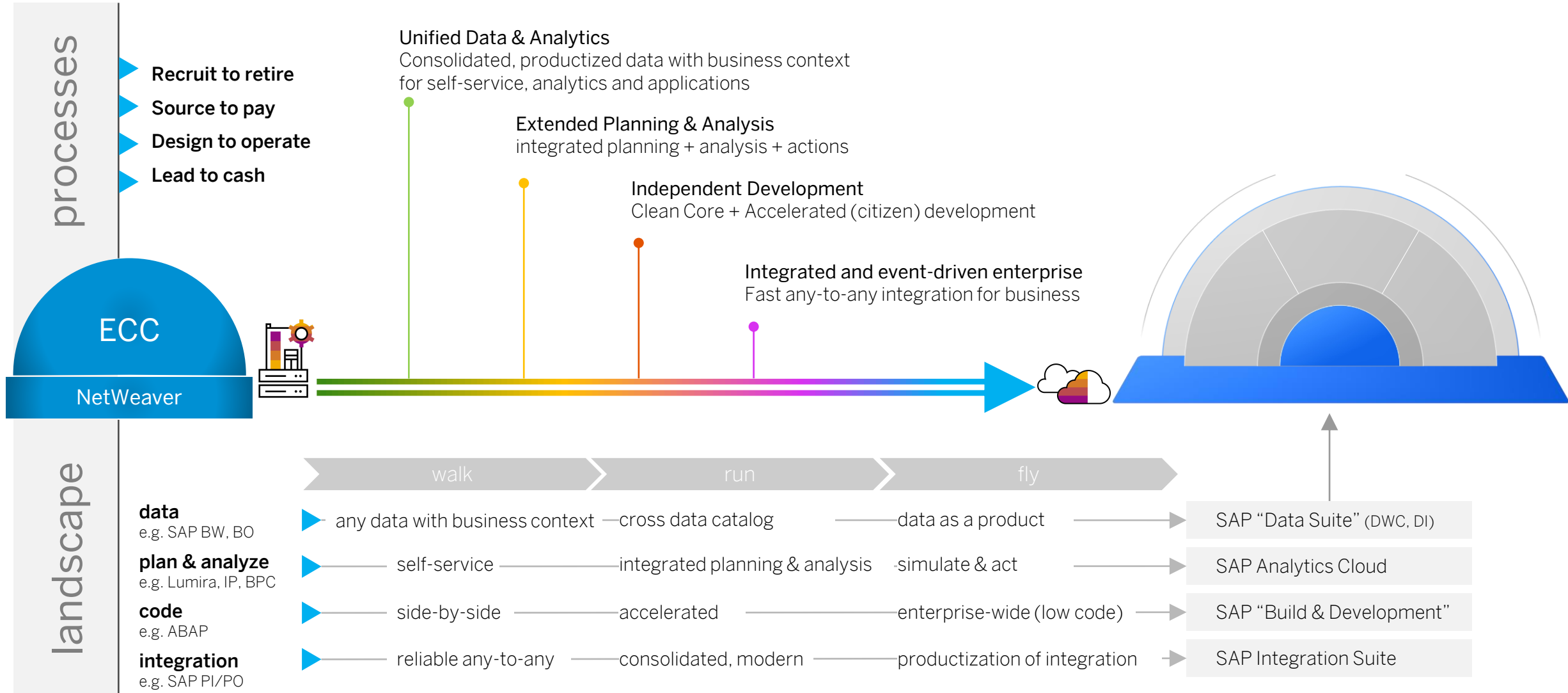
# Best cloud transformation with SAP BTP

value-oriented, business focused, simplified



# Best cloud transformation with SAP BTP

value-driving, business-oriented, accelerated & simplified



+ migration readiness checks  
+ migration guides  
+ migration tools

# BTP in action

Showcases

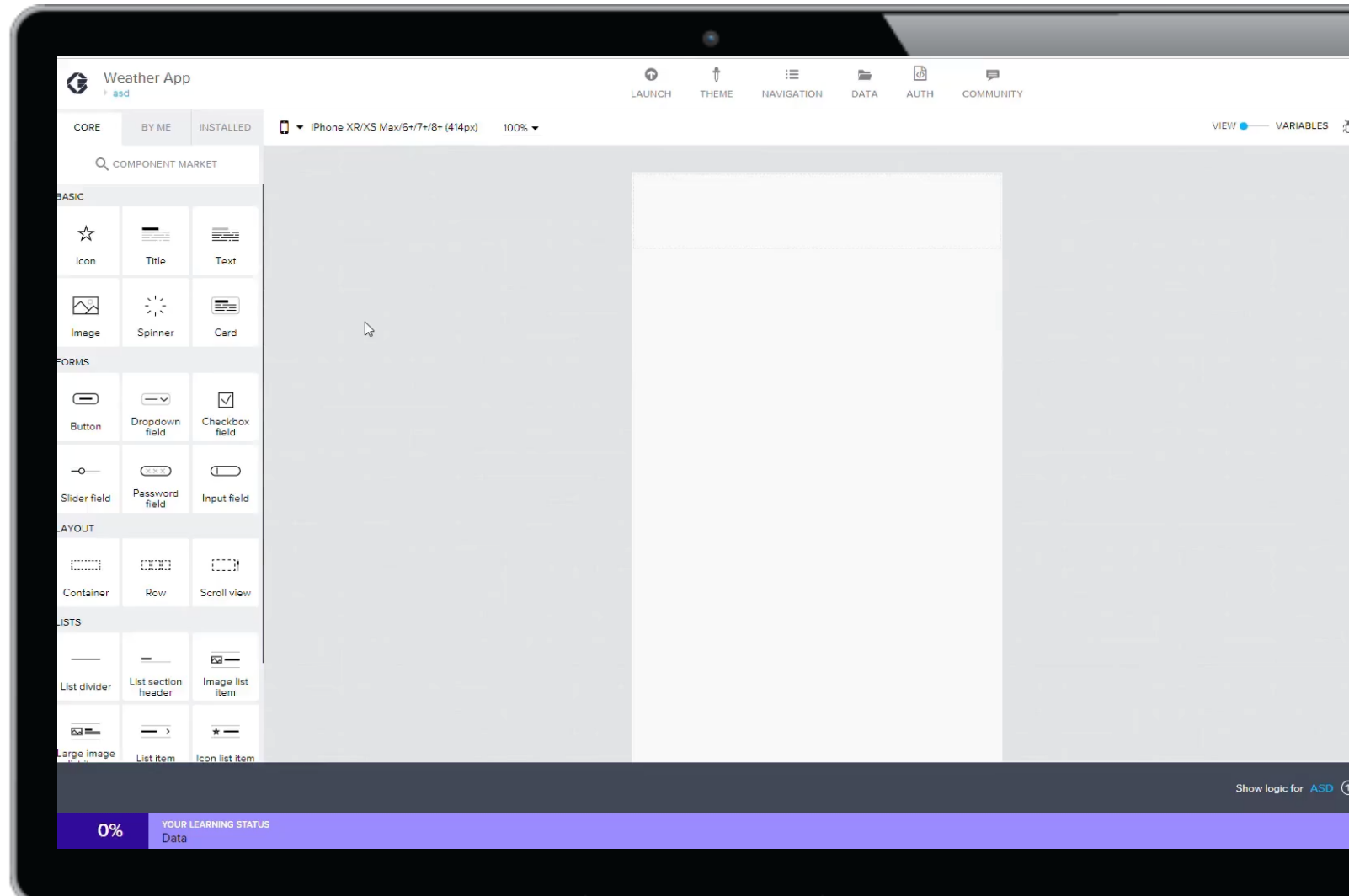




# Make everyone a builder

## SAP Build Apps

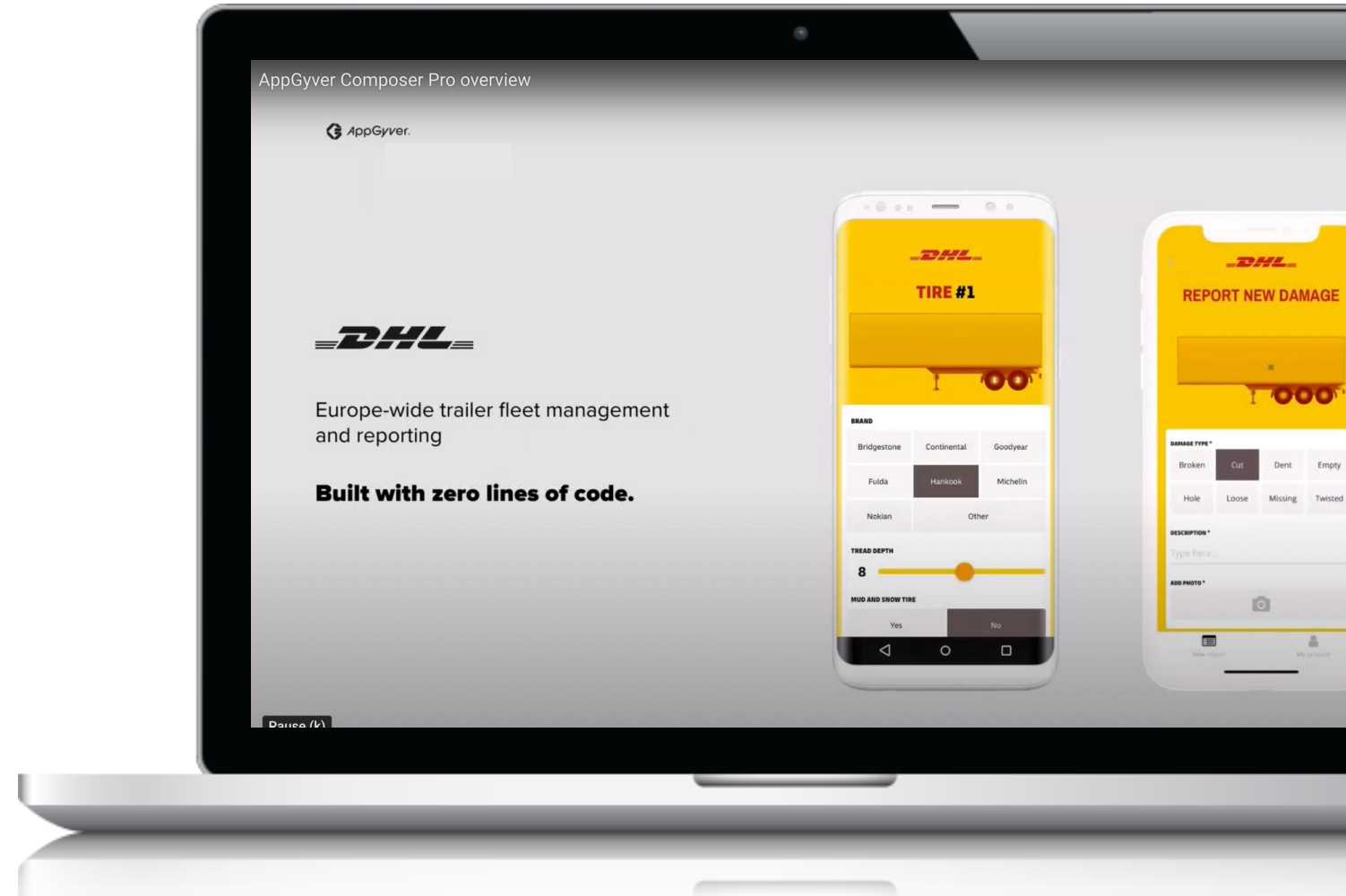
Develop custom business  
apps without coding.





zero lines of code

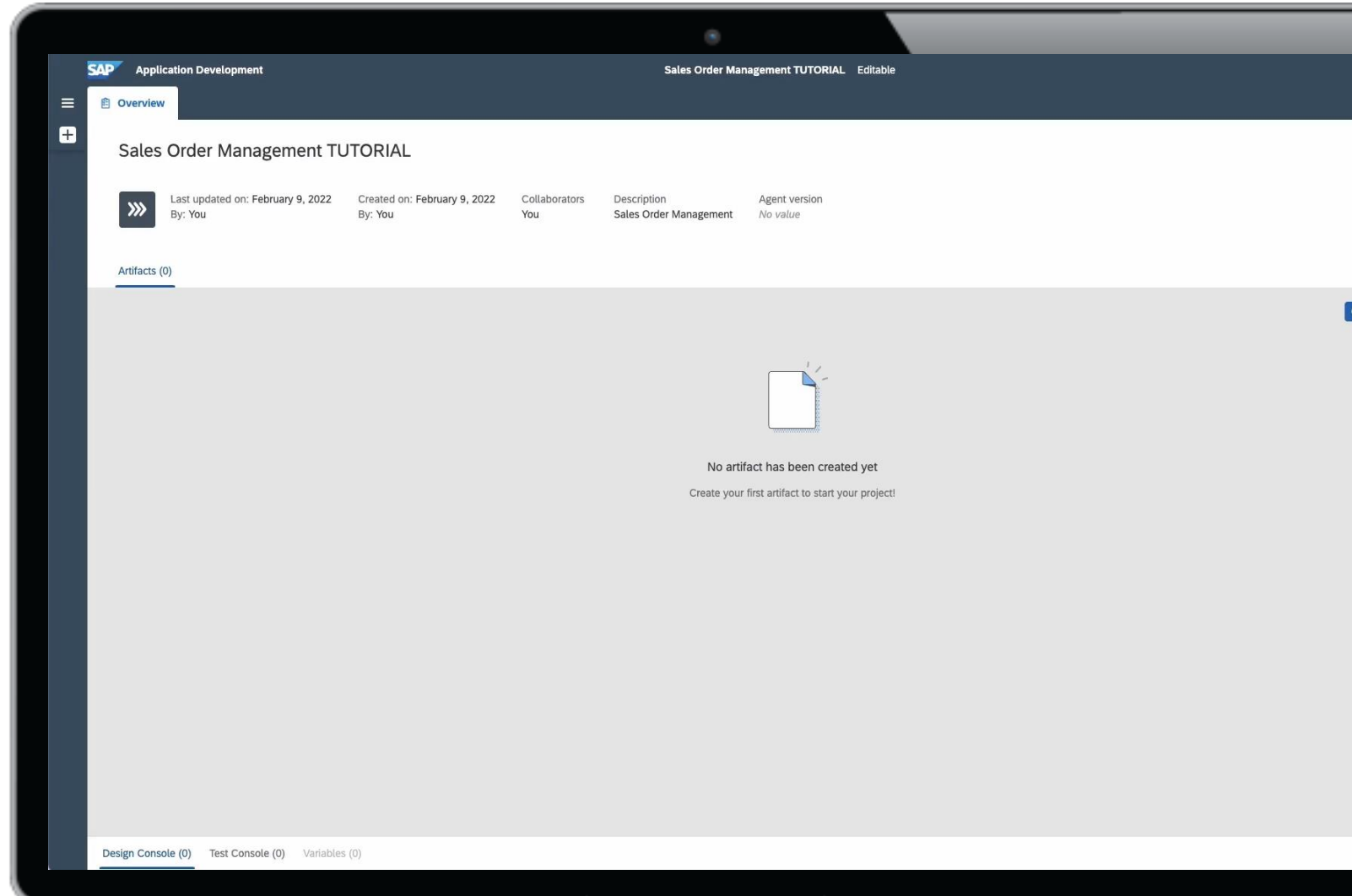
Build rapidly mobile apps for your deskless workers



# Make things work automatically

## SAP Build Process Automation

Automate workflows & tasks with drag & drop simplicity.







## Uniper SE

Extending, automating, and innovating processes from the plant to the field to HR



**70%**

productivity improvement for handling remote work request.

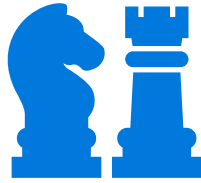
**25%**

lower risk related to HR compliance and double taxation.

**80%**

less time needed for delegation of authority in procurement.

# Innovation with #SAPLAB



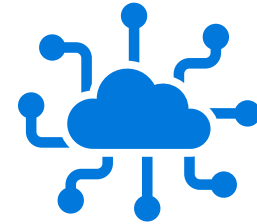
## Strategic Focus

- Innovation exploration and realization - #saplab
- Prepare S/4 Utilities implementation
- S/4 Preparation for ERP & HR
- Cloud first
- Composable ERP & automation of e2e processes
- Simplification of business processes
- Get the core clean



## Highlights in the Key Engagement Focus Areas

- Perfect Purchase Requisition Cockpit
- Delegation of Authority – DoA Boutique
- Geo-Flex - My working location App
- OSI PI to SAP
- Plant Maintenance Apps
- POC for IT Controlling (MTP) & SAC Planning for Accruals
- Data cleansing activities (HANA native storage extension)



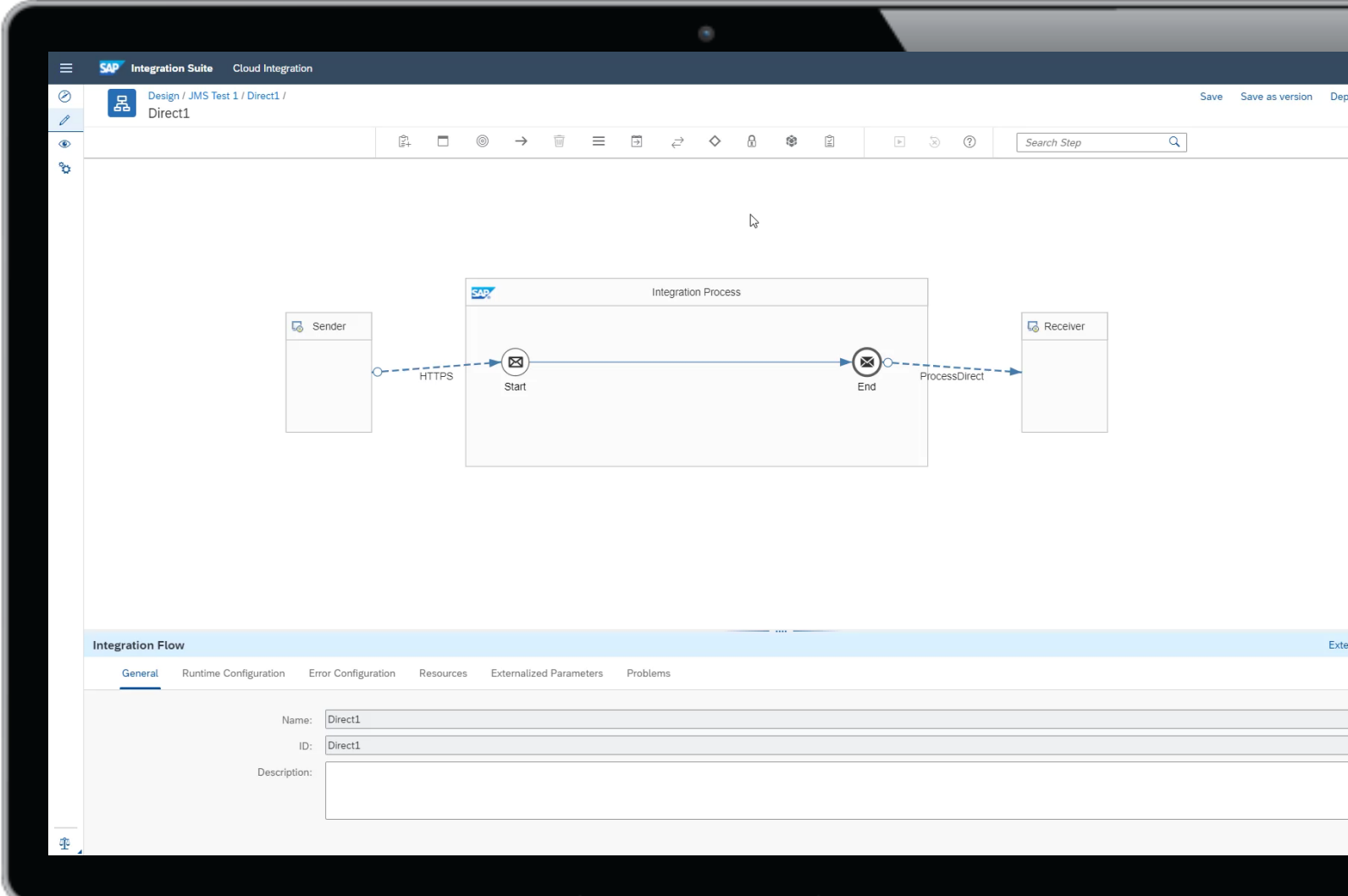
## Business Technology Platform Roadmap

- Continuous Integration, Improvement & Delivery
- Data Intelligence / Data Science
- Security & Robustness
- Migration Neo to Multicloud
- SAP PI to CPI
- Mobile Roadmap
- Low/Code/ No Code - AppGyver
- iRPA
- Machine Learning
- Chatbots

# Connect the disconnected

## SAP Integration Suite

Connect on-prem & cloud-based apps & processes with prebuilt tools & content.



# Connect the disconnected

## Situation

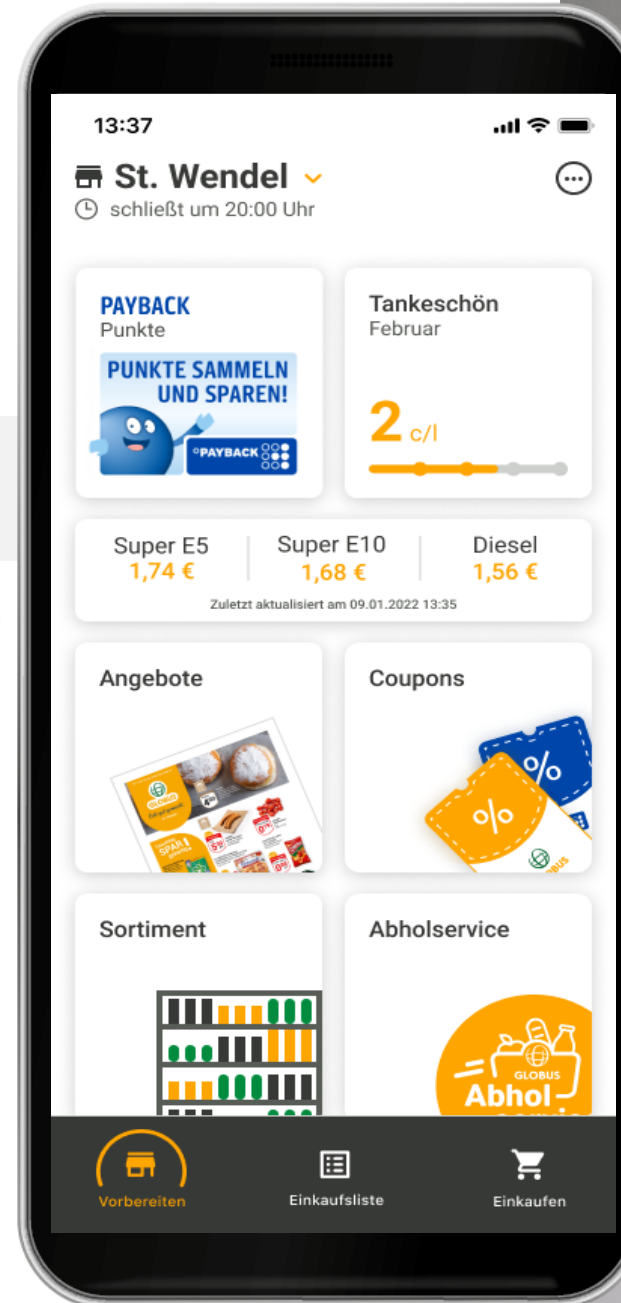
Provide **modern App** to customers to increase loyalty

## Solution

Usage of SAP Integration Suite to provide **real-time information** from backend systems

## Benefits

Provide modern, Real-time, resilient and **high-volume touch-point** for end customers

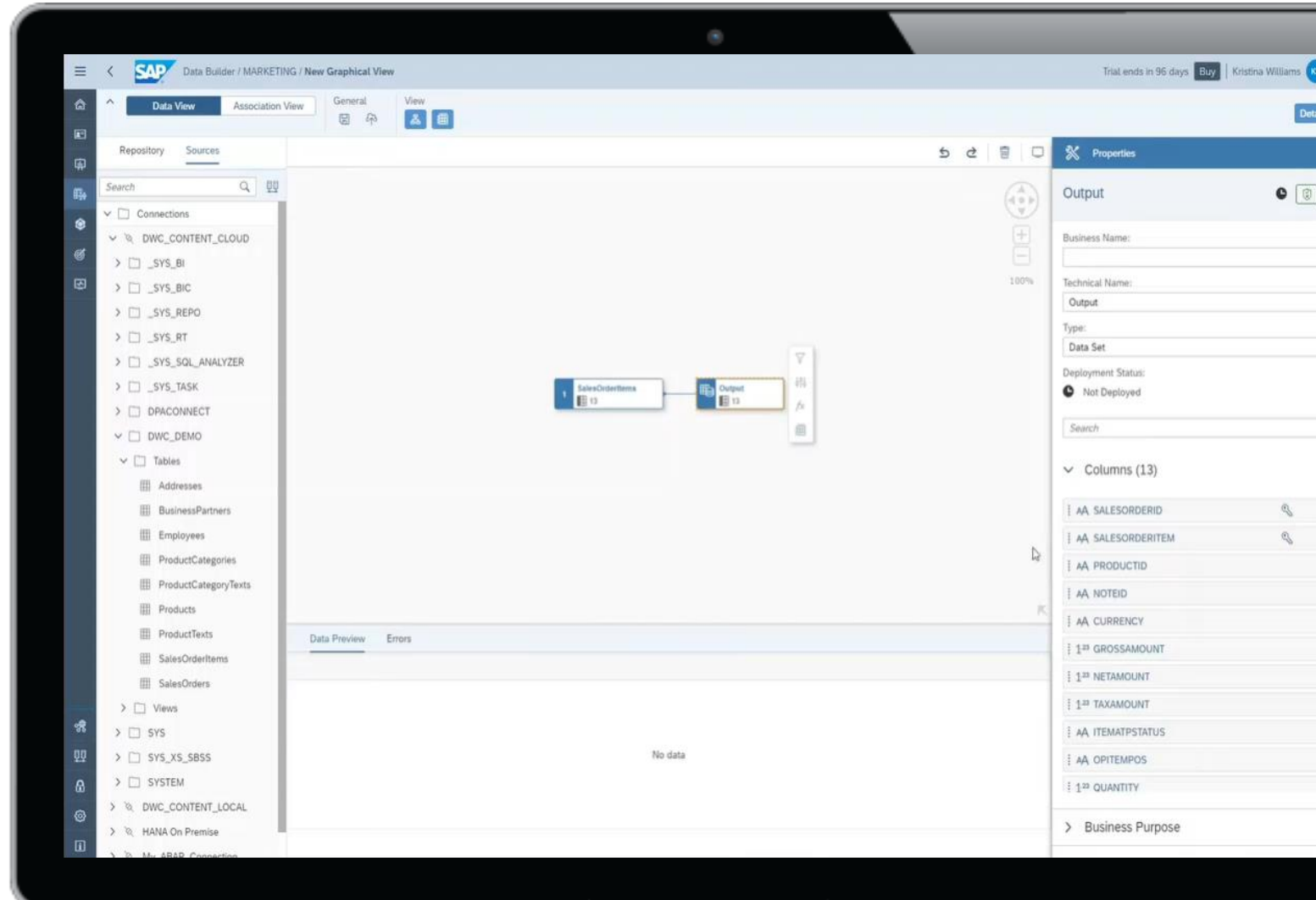




# Bring IT and business together

## SAP Data Warehouse Cloud

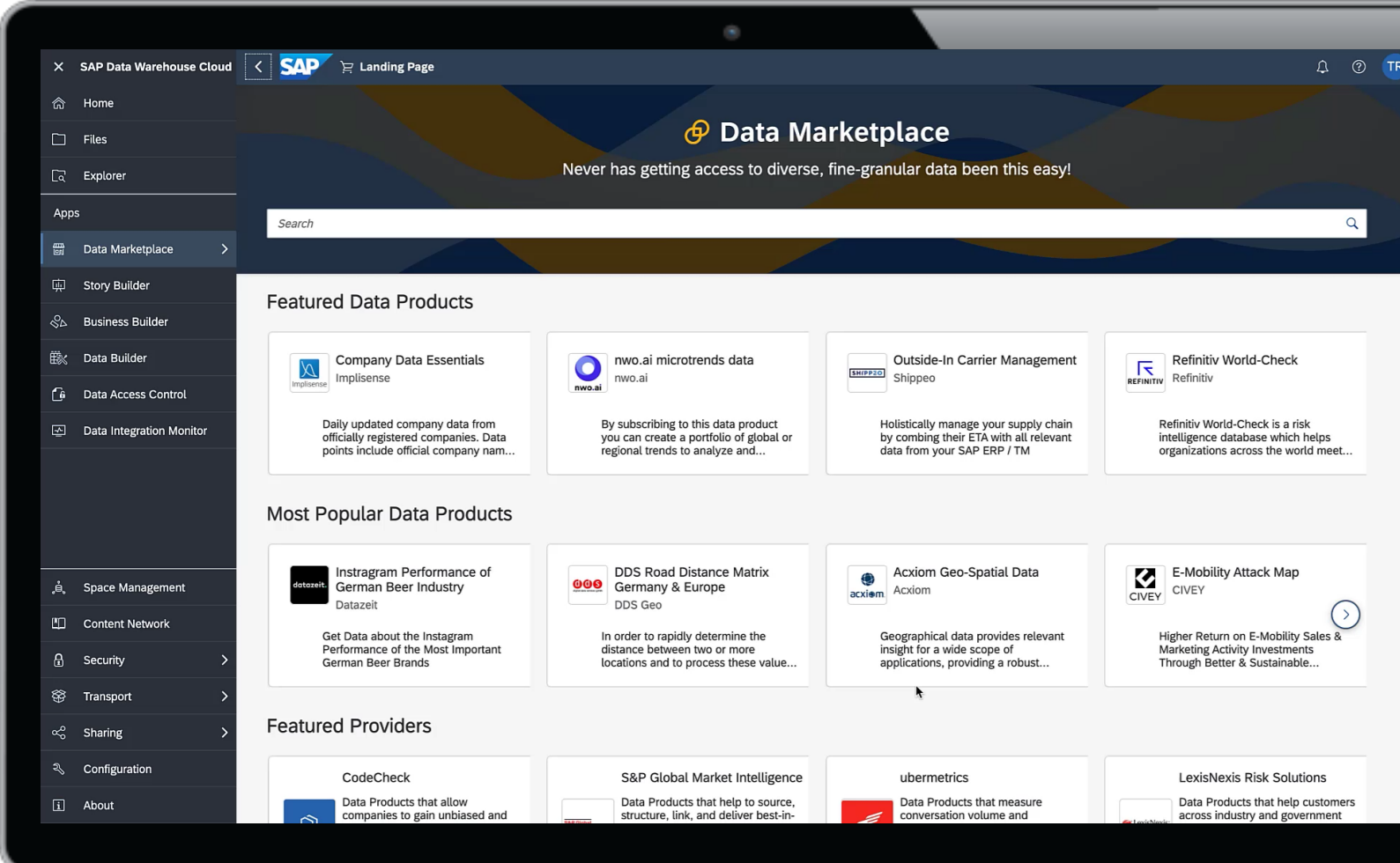
Give business users data access for data products.



# Integrate external data powered by DWC

## SAP Data Marketplace

Benchmark & analyze your business with 3000+ external data products





**FRESENIUS  
KABI**

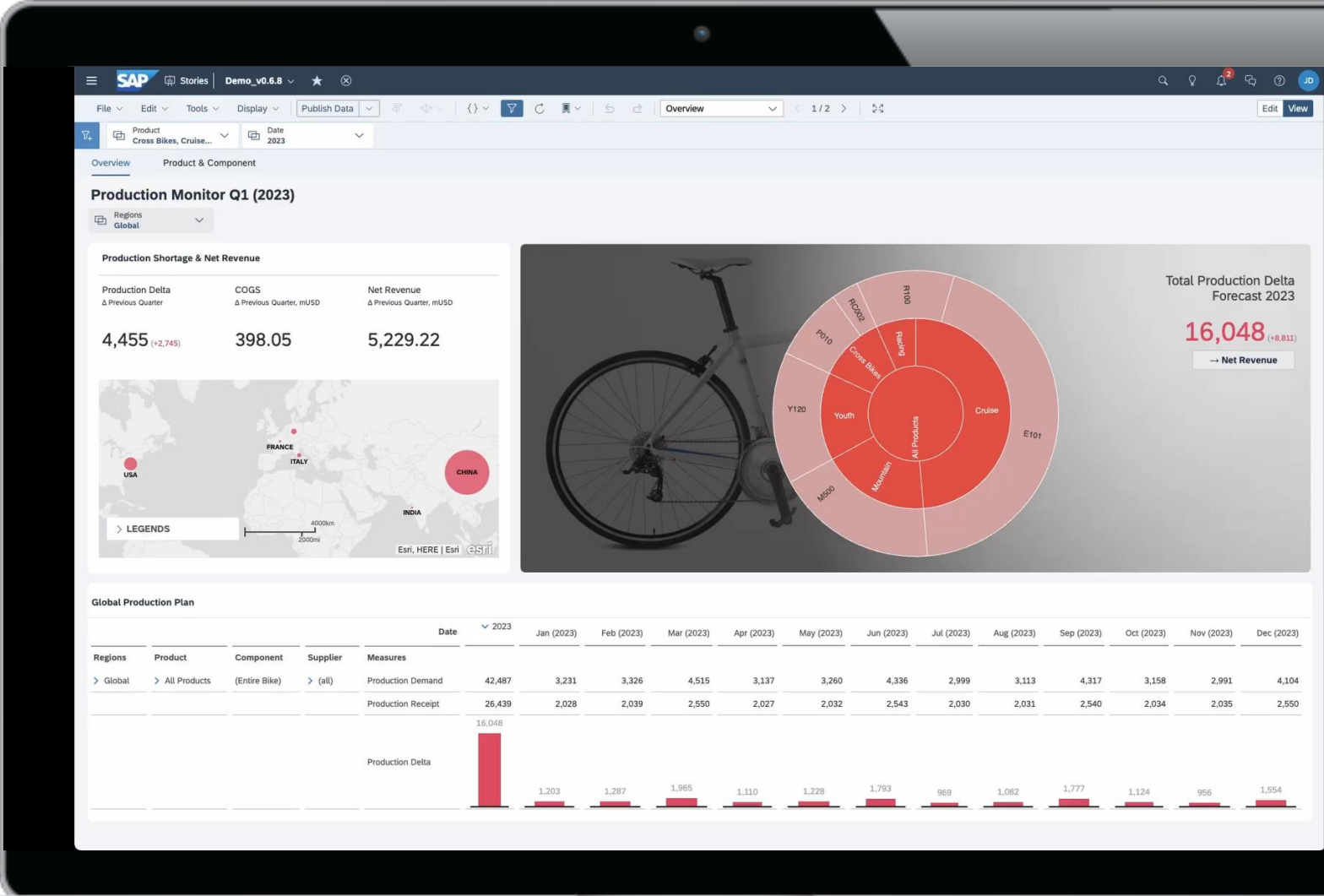
Virtual data access &  
hybrid BW use-cases



# Visualize your business

SAP Analytics Cloud

Report, predict and plan in one tool.





# SAP Analytics Cloud Unified Story

We bring Stories & Analytical Applications together in SAC

The screenshot displays the SAP Analytics Cloud (SAC) interface in the 'Develop' mode. At the top, there's a navigation bar with 'SAP Story / Application Name', tabs for 'Design', 'Develop', 'Boardroom', and 'Run', and user information for 'Sabrina'. Below this is a toolbar with categories: File, Views, Insert, Tools, Display, and Data.

The main dashboard area features several key components:
 

- Revenue:** A large green circle chart showing a value of 2 (+6%).
- Leadership Trust Index:** A score of 81 (+1%) with a small bar chart.
- Customer Success:** A large green circle chart showing a value of 395,123 (+7%).
- Renewal Rate:** A score of 70% (-21%) with a 'Button' label.
- Data Insights:** A section with 'Data Quality' at 91% and 'Data Operations' at 95%.
- Bookings Forecast:** A value of 5 (+32%).
- Global Map:** A world map with various colored markers, labeled 'Esri, FAO, NOAA, esri'.

On the left side, there is a 'Layout' panel with a search bar and a tree view showing the story structure:
 

- Layout
  - Page 1
    - Customer Success
      - Column Chart
      - Table
      - Button\_details (selected)
      - Image
      - Select
      - Label
    - Sales & Marketing
      - Column Chart
      - Table
      - Label
      - People
      - Finance
- Script objects
  - Object\_1
  - Object\_2
  - Object\_3

At the bottom, a 'Script' editor is open, showing JavaScript code for handling chart selections:

```

1 var selections = SourceChart.getSelections();
2
3 if (selections.lengths !== 0){
4   for (var i = 0; i < selections.length; i++) {
5     var selection = selections[i];
6     for (var dimensionId in selection){
7       var memberId = selection[dimensionId];
    
```

**What's planned?**

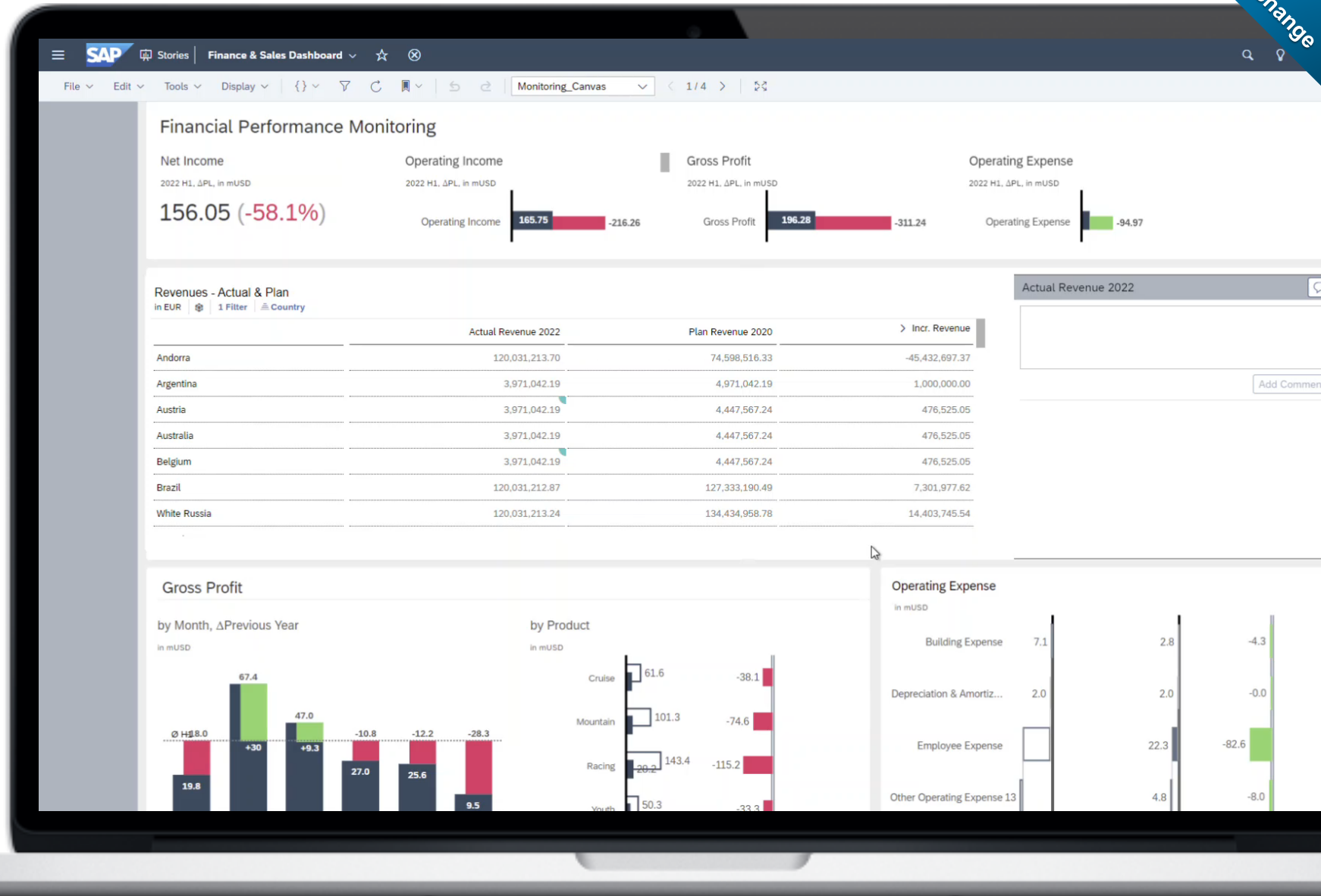


# SAP Analytics Cloud

## Live Commenting

Enable comments based on SAP Business Warehouse (SAP BW) when using a live-connected data model (Q2 2023)

- Use comments in tables ([data point commenting](#))
- Based on SAP BW comment solution. Integration of transaction data and comments in one system
- Integration across SAP BW queries (SAC models) on the same InfoProvider
- Add, edit, or delete comments
- Support for commenting widget
- Store comments in SAP BW and consume comments in SAP Analysis for Microsoft Office and vice versa

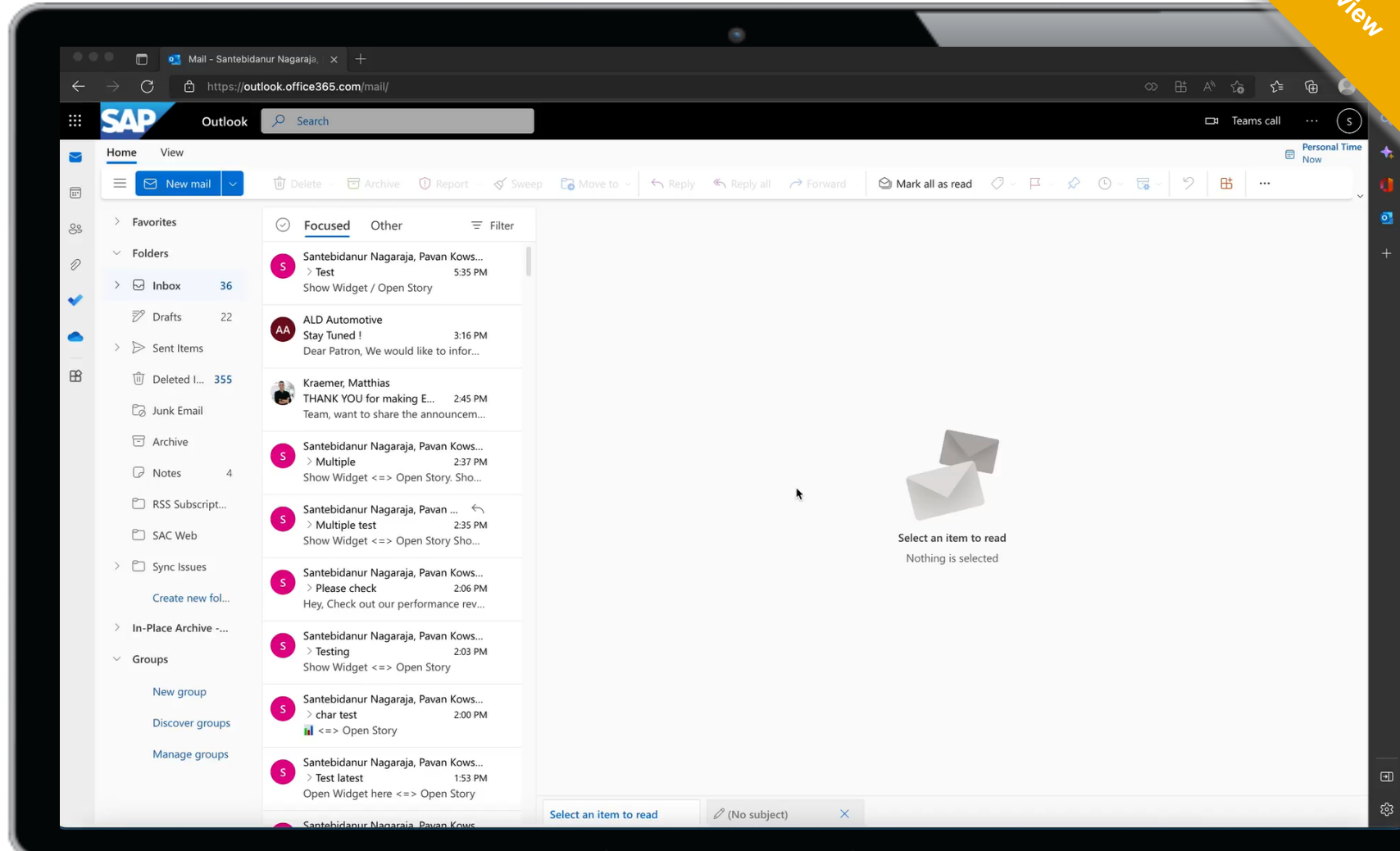


Preview  
subject to change

# Smooth integration with Microsoft

SAP Analytics Cloud & Microsoft Outlook

Faster access & easier share of reports.



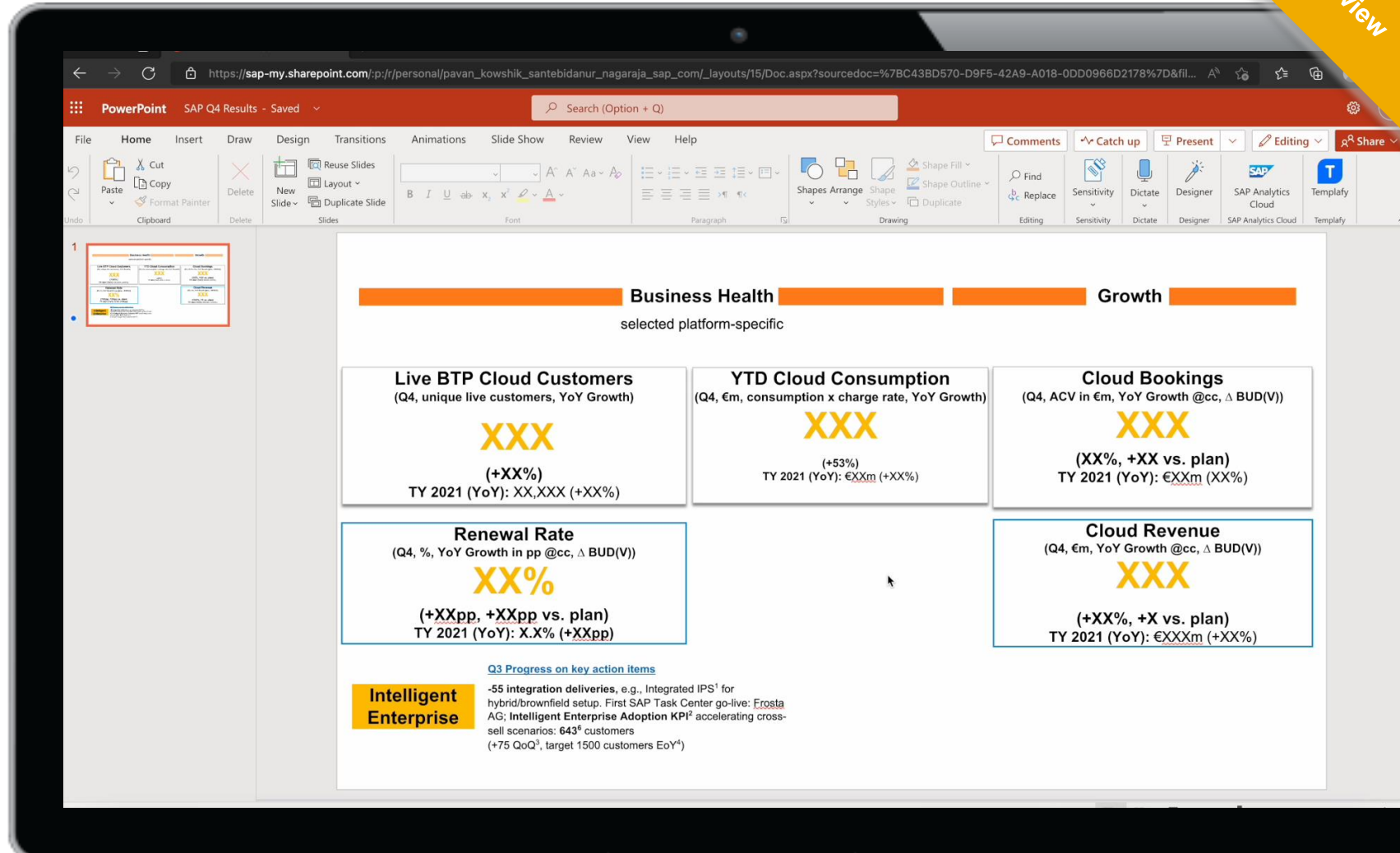


# Smooth integration with Microsoft

Labs preview

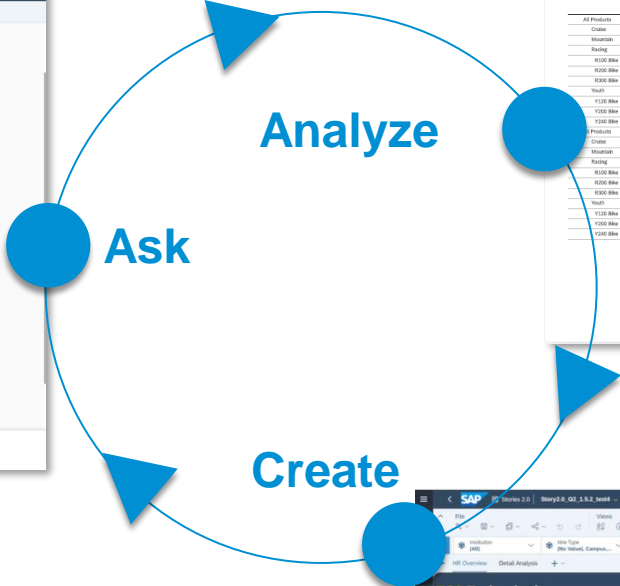
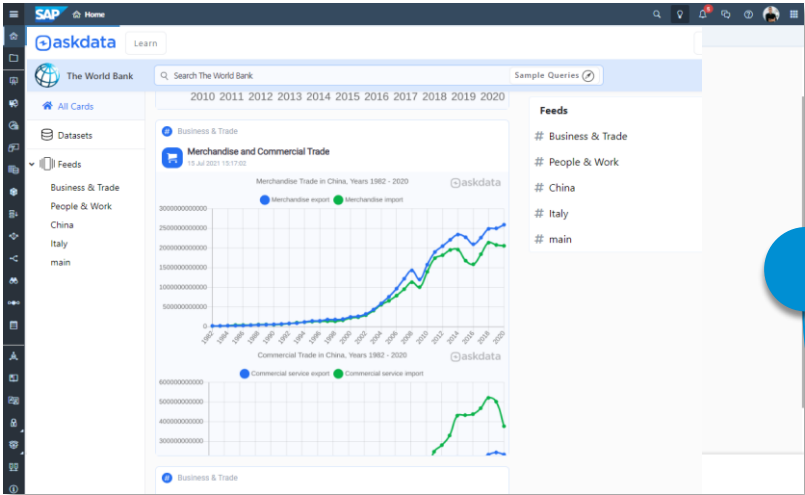
## SAP Analytics Cloud & Microsoft PowerPoint

Faster access & easier share of reports.



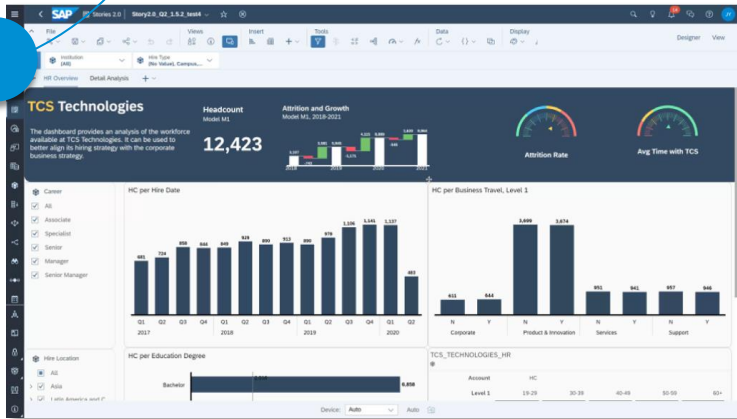
# From casual information worker to power user

## Simpler LoB experience and improved end-customer experience



The screenshot shows the SAP Analytics Cloud interface. The main area displays a data table with columns for 'Actual 2018', 'Q3 2018', 'Q2 2018', 'Q1 2018', 'Q4 2018', and 'Q3 2019'. The table lists various products and their sales figures. A sidebar on the right shows 'Available Objects' and 'Columns' for the visualization.

Product	Actual 2018	Q3 2018	Q2 2018	Q1 2018	Q4 2018	Q3 2019
All Products	268,99	267,72	129,39	184,34	224,24	224,24
Crab	86,37	58,17	12,89	238,26	679,35	679,35
Merchandise	121,89	71,27	21,53	238,23	238,23	238,23
Rawing	141,84	151,85	151,95	223,24	223,24	223,24
R/K/K Bike	51,84	7,89	7,89	23,23	23,23	23,23
R/K/K Bike	59,84	36,27	239,23	23,23	23,23	23,23
R/K/K Bike	74,49	35,23	23,23	23,23	23,23	23,23
Head	26,41	26,41	26,41	12,27	12,27	12,27
V/Y/S Bike	11,10	5,24	32,13	67,88	67,88	67,88
V/Y/S Bike	11,10	11,10	11,10	68,88	268,88	268,88
V/Y/S Bike	12,14	9,12	65,44	16,42	16,42	16,42



# CUSTOMER STORIES



Operating for over one hundred years, **Hoffmann-La Roche AG (Roche)** relies on their unique understanding of human biology and approach to health data analysis to revolutionize patient care. An important part of the R&D finance focus at Roche is to efficiently forecast the evolution of expenses across decentralized R&D business units. To achieve this goal and overhaul their time-consuming processes, Roche implemented a solution leveraging SAP Analytics Cloud.

**Alan Hippe**, Chief Financial and IT Officer, F. Hoffmann-La Roche AG



Our 10-year ambition requires a radical shift in the way we work. I am excited to see finance at the forefront of this transformation.

## PAIN POINT

- Forecasting process used by R&D finance time was **costly, reactive, and time consuming**
- **Need for augmented functionality to interpret data being stored**
- Needed an overhaul on its analytics and planning capabilities

## SOLUTION

- Deployment and implementation were **fast**, due to **the self-service nature** of SAP Analytics Cloud features
- Leveraged historical data by machine learning algorithms when creating forecasts and running planning simulations, due to **the built-in connectivity** between the two solutions
- Streamlining to **a single, scalable solution** helped Roche lower maintenance efforts and reduce costs

**70%**  
Of forecast data entry points automated in SAP Analytics Cloud

**7%**  
Improvement in forecast accuracy

**2 hours**  
To generate \$4.2 billion financial forecast

**POWERING SAP BTP** **SAP Analytics Cloud**

For more details [check out the blog](#) on Roche and SAP Analytics Cloud





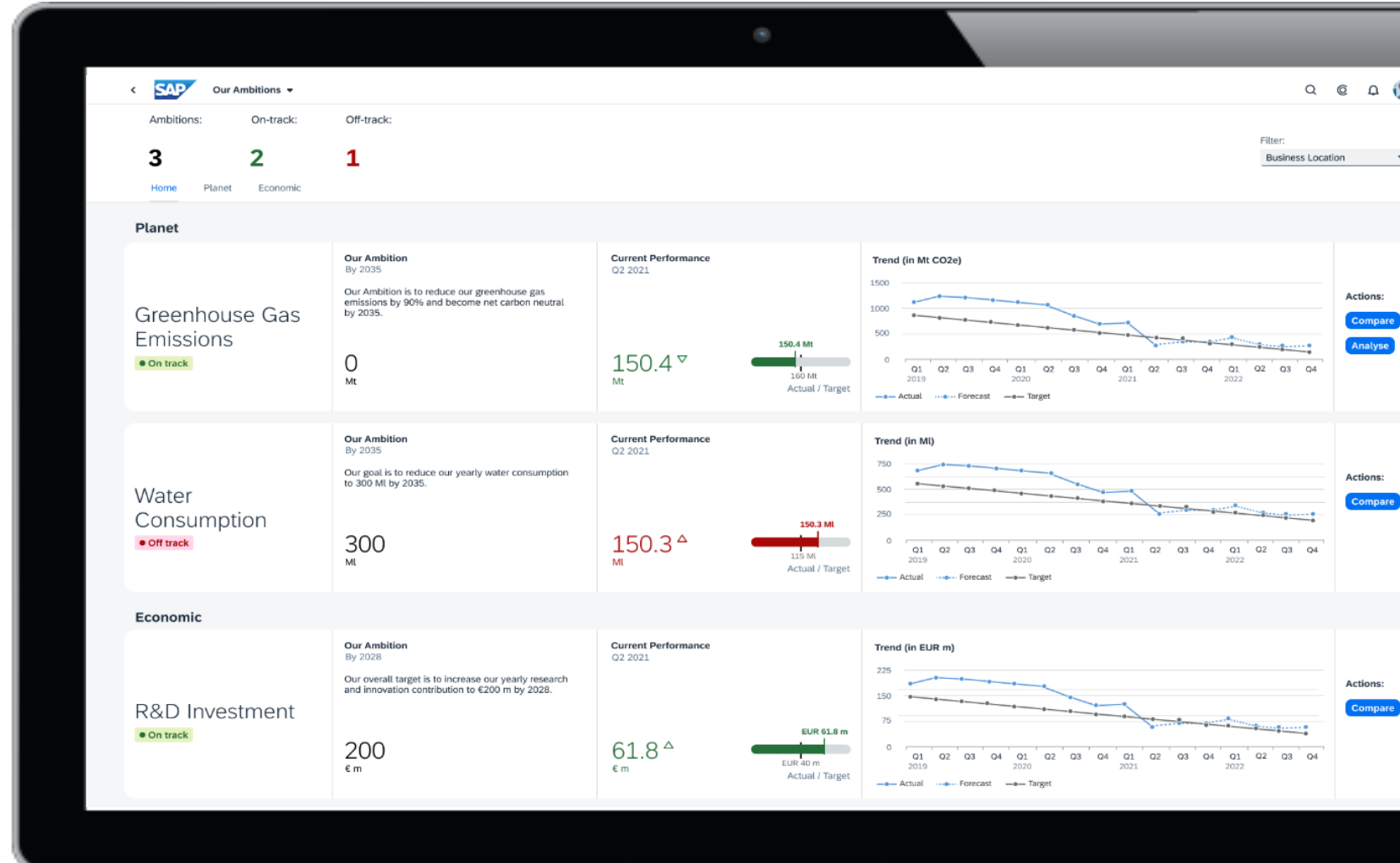
# Our purpose

Help the world run better  
and improve peoples' lives



## SAP Sustainability Control Tower

compliant reporting with actual data & insights to embed sustainability into business processes





# SAP BTP

Technology with immediate business value

## immediate use

business content &  
self-service

## business context

business semantics

## IT agility

clean core, migration  
across SAP portfolio,  
SAP Cloud integration

## open & unified

integrate across services,  
partners, and hyperscalers

# SAP Data Unleashed

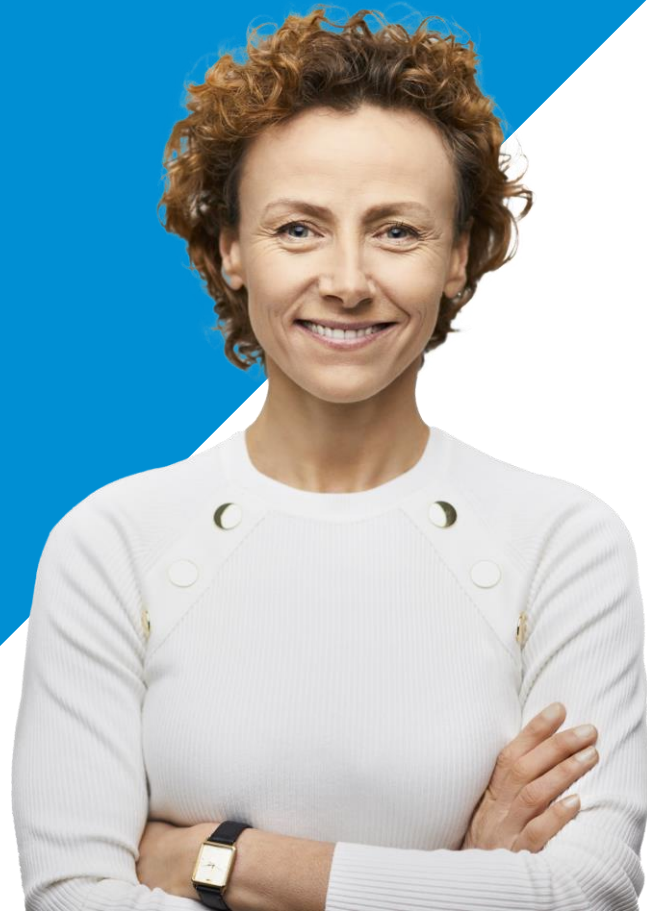
March 8, 2023

8am PST / 5pm CET

60min | Virtual Only



[Registration is Now Open](#)



## Featured Speakers



**Julia White**

Chief Marketing and Solutions  
Officer and Executive Board  
Member, SAP



**Scott Russell**

Head of Customer Success and  
Executive Board Member , SAP



**Juergen Mueller**

Chief Technology Officer and  
Executive Board Member, SAP



SAP Discovery Day zur modernen Unternehmensplanung:

# Agile Planung in unsicheren Zeiten



Scannen für mehr Infos!

16. März 2023, 9:00 – 12:00 Uhr, virtuell





Thank you

let's chat  
THOUGHTS?  
QUESTIONS?



**Mohamed Abdel Hadi**  
CTO Business Technology Platform  
Vice President of Customer Advisory Group MEE  
SAP